



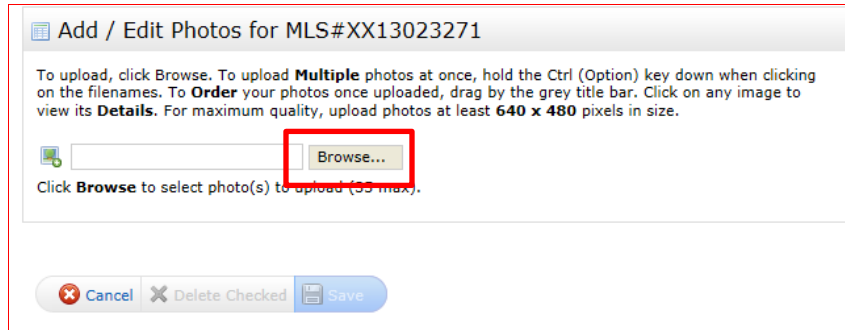
## ADDING PHOTOS TO A LISTING IN THE CRISNETMLS MATRIX PLATFORM

After you have submitted your listing in the CRISNetMLS Matrix platform, follow the steps below to add photos to your listing.

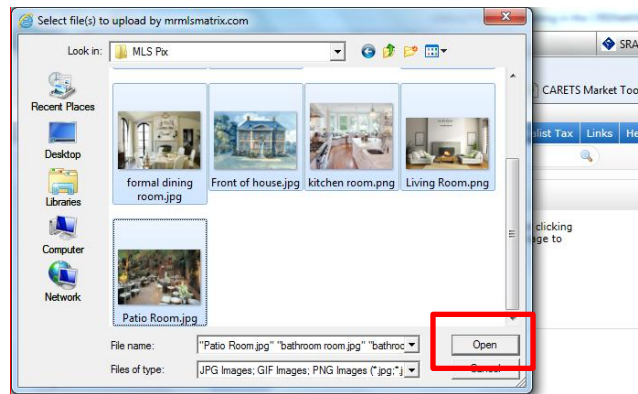
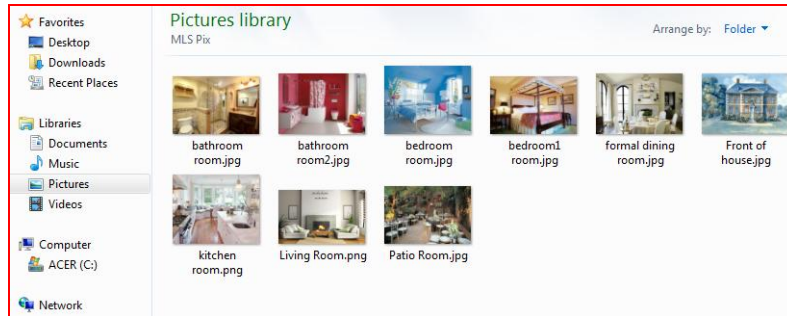
1. Click the Add/Edit tab on your CRISNetMLS Matrix homepage, then select the listing you want to modify in the Quick Modify drop-down menu.

2. Once you have clicked on/selected your listing, click the Manage Photos link on the Modify Listing screen.

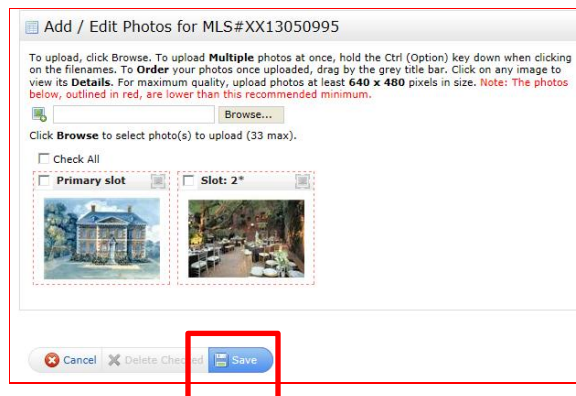
3. Click Browse to navigate to the folder your photos are located in.



4. Select the photo(s) you want to add to your listing and click Open.



5. When you are finished adding photos, click Save.



**NOTE: You can add up to 35 photo's to your listing!**